



EQUATOR VILLAGE

an exotic adventure

www.equatorvillage.com



EQUATOR VILLAGE

Equator Village, Addu City, Maldives, Tel: +960 689 8721, Fax: +960 689 8020

equator@dhivehinet.net.mv, www.equatorvillage.com

 [@equatorvillage.mv](https://www.facebook.com/equatorvillage.mv)

 [@equatorvillage](https://www.instagram.com/equatorvillage)



Sited a few miles south of the equator on Gan Island, Equator Village is the ideal getaway for those who wish to experience a different side of the Maldives. Located on the upper tip of Addu Atoll's heart-shaped landmass, the resort is connected by causeway to the inhabited villages of the atoll. This opens up the opportunity for our guests to easily travel around the atoll, interact with the locals, learn about their customs and culture and experience Addu hospitality first-hand.

LOCATION:

Maldives, Addu Atoll - Gan.
Transfer from Airport: 90 minutes by domestic aircraft from Ibrahim Nasir International Airport. 5 minute car ride from Gan International Airport to Equator Village.
Main nationalities: German, British, Japanese, Swiss, Russian, Italian.

ACCOMMODATION

78 bungalows opening into a lush courtyard garden. Spacious and cool, designed with simple European elegance, each bungalow has it's own verandah overlooking the tropical blooms.

DIVING

Diverland is a PADI 5 star Dive Centre that has been operating in Maldives since 1986. The Diverland Team takes you to the best dive spots in Maldives including the largest wreck dive site in the Maldives; WW2 cargo shipwreck - The British Loyalty. Mantas can be seen all year round, and Addu is the only place in Maldives where Manta rays with over 5 meter wings spans are known to exist.

RECREATION

In water, on land or indoors there's plenty of activities to engage yourself in. Snorkeling in the house reef is a wonderful way to see the pristine unbleached coral formations uniquely found in Addu. The large swimming pool has it's own pool bar and overlooks the ocean. A wide variety of activities are available including mountain bicycles to tour the islands.

EXCURSIONS

Four islands linked together by causeways. From Gan through Feydhoo, Maradhoo, and to the capital Hithadhoo. Three more islands - Meedhoo, Hithadhoo and Bushy island are a ferry ride away. Equator excursions are set to explore all of them in their natural and historical beauty.



SPA

Serena Spa offers a wide selection of aromatic oils, and ageold treatments to sooth your mind and body. Ancient ayurveda therapies, beauty treatments and packages specially designed to completely revive and revitalize your senses after a day in the sun.

DINING

Opening to overlook the surrounding gardens, the main restaurant offers buffets of Western, Oriental and local cuisine. The wonderfully light and airy atmosphere, teamed with our friendly experienced staff makes every meal a warm welcoming addition to your holiday.

BAR

Just the right distance from the pool, restaurant and entertainment room, the bar lights up the area in cheerfully warm splendor. A good selection of all-inclusive drinks is marked for your convenience. This is a place to relax, chill and swap stories with fellow travelers.



GENERAL FACILITIES AND SERVICES

PADI Dive Courses	Land Sports
SSI Courses	Excursions
NAUI Courses	Evening Entertainment
Nitrox	Serena Spa
Snorkeling	Multilingual Library
Fishing	Restaurant
Swimming Pool	Bar
Beach chairs	Wi-Fi
Water Sports	Laundry



LOBBY AREA



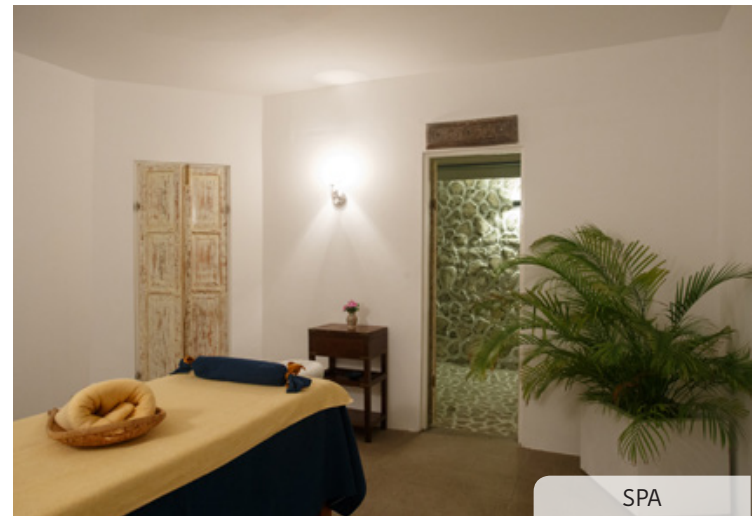
ROOM



POOL



UNDHOALIGE



SPA